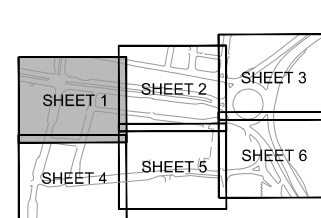


GENERAL NOTES



Notes:

- All signs and road markings to be in accordance with the Traffic Signs Regulations and General Directions 2002.
- Double Yellow lines to be 'primrose' colour and 50mm wide.
- Positioning and locations to be in accordance with the guidance provided in the Department of Transport Traffic Signs Manual.
- Materials, processes and quality of workmanship employed in the installation of signing and marking to be in accordance with the Specification for Highway Works.

Key:

- 1020.1 Diagram Ref. No.
- Loading and unloading of vehicles on a side of a length of road prohibited at any time.
- New Bollards - NB1PF, NB2KR, NB3PF, NB4PF
- PF = Plain Faced
- KR = Keep Right
- To be SignPost Solution 3sixty or similar approved
- Proposed railing

E04	08:03:16	AMENDED AS PER COMMENTS	MC
E03	15:01:16	LAYOUT UPDATED	GH
E02	11:01:16	UPDATED VICAR LANE LAYOUT	RH
E01	11:12:15	LAYOUT AMENDED - ISSUED FOR CONSTRUCTION	MC
A05	26:11:15	LAYOUT AMENDED, LIGHTING COLUMN TO THE NORTH OF HAREWOOD STREET REMOVED	MC
A04	23:07:15	1-WAY SIGNS NORTH END OF HAREWOOD ST REMOVED	SP
A03	14:07:15	LEEDS CC COMMENTS ACTIONED / AREAS WITHIN DEVELOPMENT ADDED	SP
A02	02:03:15	EXTENT OF HATCHING & HAREWOOD STREET ACCESS ALTERED	SP
A01	16:10:14	FIRST ISSUE	SP
Rev	Date	Description	By

Amendments	
Project	VICTORIA GATE, LEEDS
Title	TRAFFIC SIGNS, MARKINGS & BARRIERS SHEET 1
Client	HAMMERSON

Waterman
Transport & Development

Pickfords Wharf Clink Street London SE1 9DG
t 020 7928 7888 f 020 7928 3033
mail@watermangroup.com www.watermangroup.com

FOR CONSTRUCTION				
Designed by	SP/MC	Checked by	MC	Project No
Drawn by	CM/SP	Date	FEB 14	34992
Scales @ A1 / A3 work to figured dimensions only		1:200 / 1:400	Computer File No	34992SA15/2014.dwg
Publisher	Zone	Category	Number	Revision
C	SA	75	1200-1	E04

CUTLINE - FOR CONTINUATION SEE SHEET 2

CUTLINE - FOR CONTINUATION SEE SHEET 4

NOTE: DEVELOPMENT LAYOUT MAY NOT BE CURRENT. REFER TO LATEST DRAWINGS BY ARCHITECT / STRUCTURAL ENGINEER.